

October 2014 Release Notes

Build 5672 on CMS released Wednesday 10.15.2014

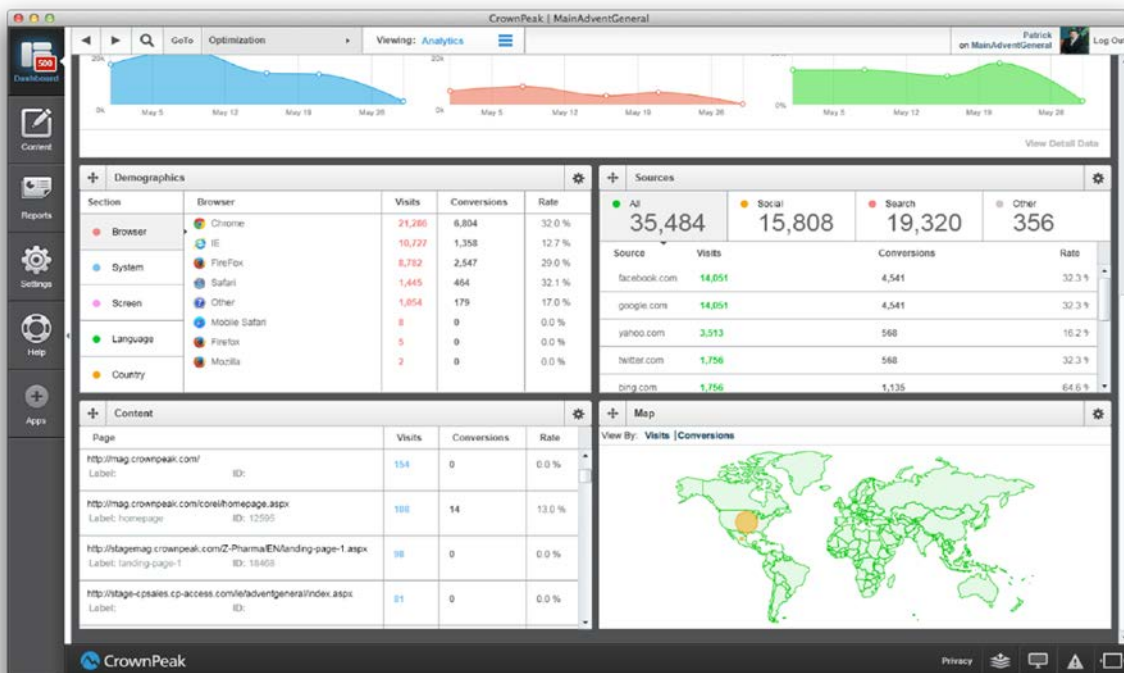
+ Updates in this Release +

The feature of the month is an update to CrownPeak’s Website Reporting & Analytics. This is a new dashboard feature that enables users to view Website visitors and other key statistics on one easy-to-read page. Just click the Dashboard page and select the “Analytics” tab to see:

- Website visitors and conversions charted over time
- Demographics (i.e.: Browser, Operating System, Screen Size, Country, Language)
- Referral Sources (i.e.: Search Engines, Social Media, Other)
- Dynamic Content (i.e.: Targeting Profiles, Testing Results)

See the Reporting and Analytics demonstration video at:

<http://connect.crownpeak.com/products>



CrownPeak Reporting and Analytics Dashboard

Summary

■ ■ Reporting & Analytics Dashboard (CMS-3363)

The new Reporting and Analytics Dashboard provides detailed statistics about visits to your Website. Contact CrownPeak support to enable this dashboard.

■ ■ Toaster Messages/Monitor (CMS-799)

The Toaster messages have been removed in place of a new Activity Monitor. This monitor will be used to evaluate long running tasks including Publishing. The monitor can be accessed via the [Cloud] icon on the bottom right ribbon.

■ ■ Template Debugger Upgrade (CMS-4402)

The CMS Template Debugger is now a dockable floating tool bar that displays debug logging messages, user interface notifications, and error messages.

■ ■ Services Library Update – Minimizer Support (CMS-4255)

This new Services Library provides support for minification within your Websites and Web applications. Minification is a popular method to reduce the size of your cascading style sheet (CSS) and JavaScript (JS) files in the hosting environment.

Java Update Information

Java Runtime Environment (JRE) version 1.8.0_25 has shown issues while using the Ephox editor in the following areas:

- Spellcheck
- Insert Image
- Insert Template
- Insert Html
- Accessibility

Upgrading to this version is not recommended. However, maintaining the previous version (JRE version 1.7.0_67) should not cause issues when editing within the CMS.

If your system requires an upgrade, please use the TinyMCE editor. Due to the timing of the JRE release, the issues could not be resolved without a delay to the CMS release. Work has begun on a patch release.

CMS Monthly Tip

Each month we will provide a “Best Practice” suggestion to make your CMS experience better. This month we have a tip for using the **GetFileList** and **GetFilterList** functions in the CMS Template Library. We have seen huge performance problems in the misuse of filters. With a couple quick changes you can dramatically speed up your asset rendering times. Here is an example of a better way to use filters:

Preload the asset fields by setting the FieldNames property to improve the performance of filter request. For Example:

```
// Declare your variables
Asset startFolder = asset.Parent;
FilterParams fParams = new FilterParams();

// Define your exclusion list and field names lists
List<string> excludeTemplates = Util.MakeList("Master Page", "Global Config");
List<string> fieldNames = Util.MakeList("xmlsm_priority", "xmlsm_changefreq");

// Define filtering criteria
fParams.Add(AssetPropertyNames.TemplateLabel, Comparison.NotInSet, excludeTemplates);
fParams.FieldNames = fieldNames;

// Apply filter and execute list request
List<Asset> siteAssets = startFolder.GetFilterList(fParams);
```

For more information on this topic please visit the related article on Connect:

<https://connect.crownpeak.com/blogs/developers/filterparams-fieldnames-property-best-practices>

Developer Improvements

1. Added `DisableWrapCustomTagsinP` wysiwyg parameter (CMS-4519)
2. The command context.`InputForm` returns an empty string for deleted fields and skips deleted panels in `post_input.aspx` (CMS-4626)
3. The debug console will start capturing data on open (CMS-4403)
4. The command `post_input.aspx` context.`InputForm` will not return an empty string when using `upload_name#` fields (CMS-4641)
5. The animated descriptions in the right accordion have been moved to the Property detail pages (CMS-4542)
6. The `DeveloperCS` template can be viewed via View Output (CMS-4670)

Other Updates

1. The Active Standards label has been updated with server information (CMS-4605)
2. Logs were added for changes to Security and Password Expiration (CMS-4627)
3. Superscript, Subscript, Anchor, Search (Find), Justify (left, right, center) buttons appear in the TinyMCE4 toolbar (CMS-4634)
4. Text color and highlight color buttons are available in TinyMCE 4 (CMS-4293)
5. The spell checker is working for TinyMCE (CMS-4651)
6. The extra link button has been removed when switching from Ephox to TinyMCE (CMS-4297)
7. The `bodystyle` WYSIWYG parameter has been implemented for TinyMCE (CMS-4171)
8. F5 will no longer render the page frozen when using WYWSIWYG editors (CMS-4033)
9. The error section appears on an asset's General Properties on Volte (CMS-79)
10. A user with no expiration date can be cloned (CMS-4646)
11. Breadcrumbs have been added to all Property detail pages for assets (CMS-4558)
12. The delete button shortcut has been disabled on assets already deleted (CMS-4513)
13. On the Settings –User page, expired users will appear in red (CMS-4569)
14. Updated the date formatting on MAC in the Edit User interface (CMS-4529)
15. Volte in-browser mode will link to assets so that it redirects to the requested URL (CMS-3936)
16. Publishing headers have been realigned with the columns (CMS-4612)
17. Updated the System Audit when creating files from models (CMS-4531)

