



Volte March 2014 Release Notes

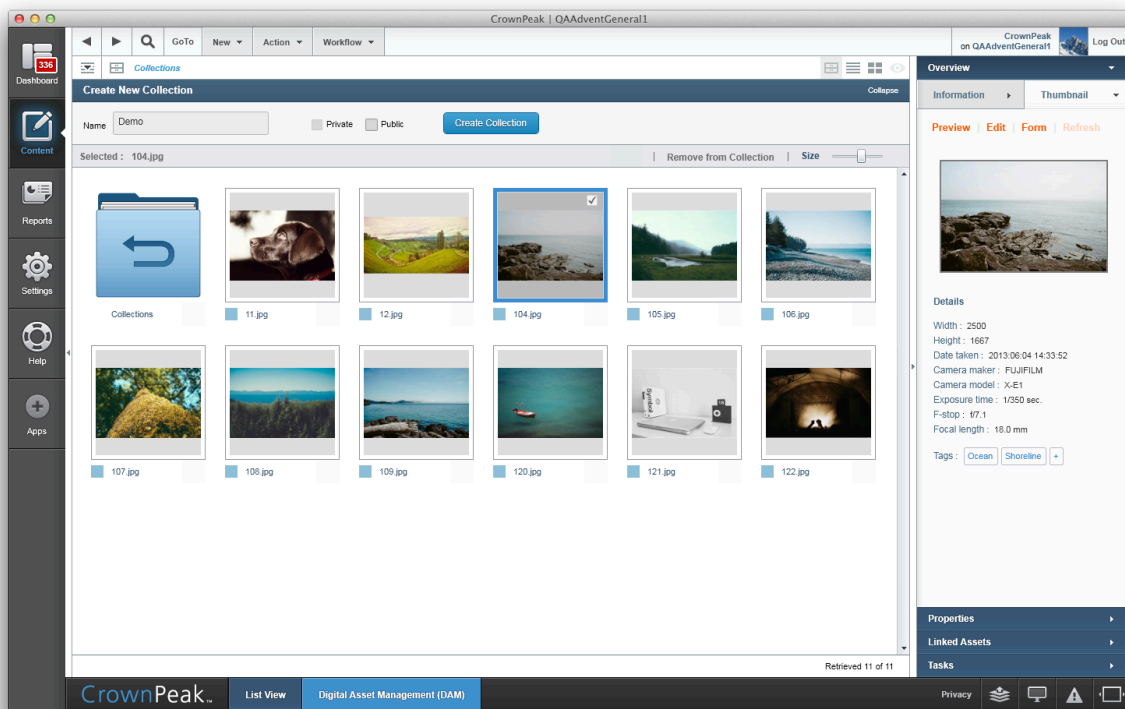
Build 5107 on CMS released Wednesday 3.19.2014

Updates in this Release

This month we are adding more to the new Digital Asset Management (DAM) Beta feature. Now users can add video, audio, image, and content assets into logical groupings we called Collections (📁). These Collections then can be used to quickly find and use your assets throughout the CMS. Please contact support to enable the DAM and Collections features in your instance.

See the Collections in DAM demonstration video at:

<http://connect.crownpeak.com/products>



Summary

📁 Collections (CMS-2280)

Collections are groups of assets that can be shared and reused by many users in the CMS. Select one or more assets and click the **[Add to Collections]** link at the top of the page. Look for the collections icon (📁) in the top right side of the **[Content]** page.

📁 Collections in the Image Picker (CMS-2280)

Collections can be used to select an image in the Image Picker window available through the WYSIWYG tool bar or on the Edit Form screen. Find the image picker by navigating to **[GoTo] Menu/Edit Form/[Your Asset]/Expand All/[Find Your Image]/[Select]** button. The Collection icon is on the top right of the window. Only available with TinyMCE editor.

☰ Orphan Content Report (CMS-2710)

This report scans the website code on your publishing server and determined if there are any orphan files or broken links. Look for this report by navigating to **[Reports][Audit][Orphan Content]**. Note: There are privileges in the CMS to run and view this report. **Contact support for the details.**

☰ Browser Compatibility Updates (CMS-2144)

We have upgraded the CMS to support recent browser and operating system updates. The new environmental updates including: IE10, IE11, Mac OS X, and more.

☰ Copy/Paste/Clone – Special Options (CMS-2664)

The special options panel has been updated for both the Copy/Paste and Clone options.

The panel will show when a folder is selected since there is ambiguity in the asset status

- Only selections relevant to the the folder will be displayed
- No defaults will be selected
- Text has been added to clarify the resultant workflow states of the newly created assets

☰ TinyMCE 4 Updates (CMS-3621)

We have upgraded the CMS to support TinyMCE version 4.0.16 released on January 31st. 2014. This version is expected to resolve a number of browser compatibility issues with IE9, IE10, IE11, Mac OS X, and more. **Contact support to change the default version of TinyMCE in your instance.**

Operating System (OS) News

1. *As of April 8, 2014 Microsoft will no longer be supporting the Windows XP platform.*
2. *As a result, CrownPeak will no longer perform fixes specifically tied to issues with Windows XP.*
3. *Due to the reduced number of compatible Operating Systems support for IE 8 will become limited.*
4. *Look for a new version of the CrownPeak support matrix with the April CMS release.*

Other Updates to the Application

1. *Adjusted the location of the Warning Prompt in the Classic UI (CMS-3657)*
2. *Fixed a spacing issue with the Menu Dropdowns in the Classic UI (CMS-3656)*
3. *Fixed an issue where an error would occur when using the forget password option in the Classic UI (CMS-3460)*
4. *Fixed an issue where Help was not working in the Classic UI (CMS-2382)*
5. *Fixed an issue where the left navigation panel may not show while using the Classic UI with IE 9 and 10 (CMS-3642)*
6. *Updated the wording on the Classic UI forgot password page (CMS-3461)*
7. *Fixed an issue with the Browse button not working in the Classic UI (CMS-3645)*
8. *Adjusted the title of a cloned folder to read "Clone of" (CMS-3683)*
9. *Fixed an issue where assets created from models would not advance through the workflow if the model was not located in the /Systems/Model folder (CMS-3631)*
10. *Fixed an issue where the Edit workflow option would always show as available (CMS-3654)*
11. *Fixed an issue with the Spell Checker not working with the Ephox editor (CMS-3606)*

12. Fixed an issue with the TinyMCE spell checker (CMS-3586)
13. Fixed an issue with TinyMCE stripping <object> tags (CMS-3387)
14. Fixed an issue with TinyMCE handling of video code (CMS-3514)
15. Fixed an issue where no image preview would show (CMS-3695)
16. Updated the user experience for the Special Paste screens (CMS-2664)
17. Fixed an issue where leading and trailing spaces in the name of a newly created asset were not being removed (CMS-3588)
18. Removed the Mail Server field in the General WCM Configuration settings as it is a set value (CMS-3745)
19. Fixed an issue with pathnames showing different results (CMS-3772)
20. Update the Paste Special screen to only states found within the copied/cloned folder are now displayed on the special paste screen in classic (CMS-3748)
21. Fixed an issue where Edit Form would not activate when using the Right-click option (CMS-3784)
22. Fixed an issue with illegal namespaces (CMS-3791)

CrownPeak™