



Volte February 2014 Release Notes

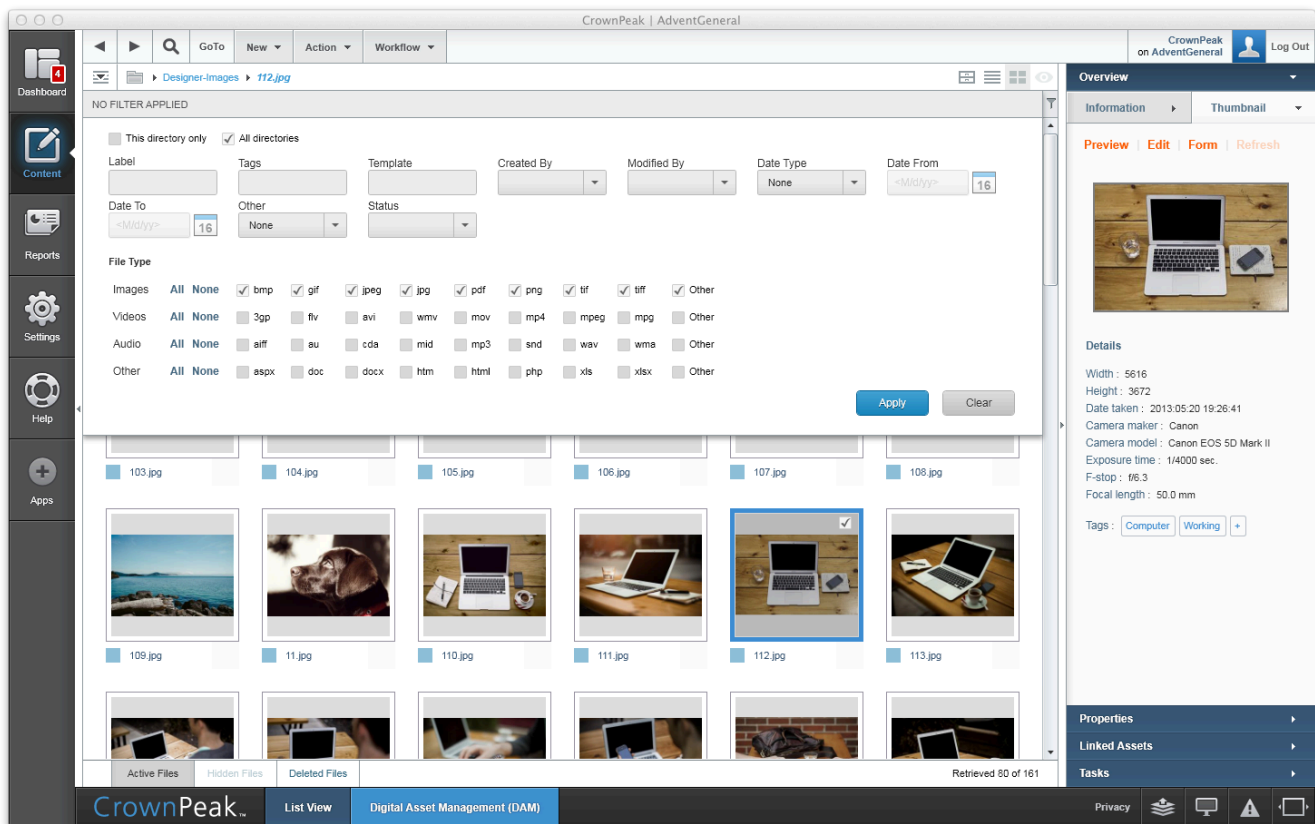
Build 5014 on CMS released Wednesday 2.19.2014

Updates in this Release

We have some exciting new features in this release including the beta version of our Digital Asset Management (DAM) and Image Editing tools. The DAM mode extends the file folder metaphor so you will be able to browse and select assets as thumbnail images, filter for several asset types, and edit most images directly in the CMS. Please contact support to enable Digital Asset Management in your instance.

See a demonstration video of Digital Asset Management at:

<http://connect.crownpeak.com/products>



Summary

■ Digital Asset Management (CMS-2280)

Introducing the ability to manage and manipulate CMS assets as images. Users can switch between views by clicking the **top right icon** or the **bottom center labels**.

■ DAM – Filtering (CMS-3303/CMS-3304)

Filter your content by several new asset types including: images, videos, audio, and more. Select the **[All directories]** checkbox to search across the entire CMS. We have also added the **[Tags]** input control to search by **[Metadata Keywords]**.

■ ■ DAM – Multiple Size Image Viewer (CMS-2280)

This feature allows users to view and download images in three standard resolutions, view upload history, and review asset permissions. Users can access the image viewer by **double clicking on an image**.

■ ■ DAM – Tagging / Keywords (CMS-3090)

This feature allows uploaded assets to be tagged. These tags can be used for grouping and searching assets. Users can add, delete, or edit tags by **right clicking** on an asset, select **[Edit]** then **[Metadata Keywords]**. Keywords are separated by commas.

■ ■ DAM – Audio / Video Preview (CMS-3304)

Users have the ability to preview audio and video files. The CMS supports a large number of formats. This includes extracting meta data and presenting it in the right side **[Overview][Thumbnail]** accordion.

☰ Mixed Copy/Paste (CMS-2427)

The ability to perform a mixed copy and paste has been enabled. This allows a user to select folders and individual assets to be copied/pasted in one command rather than having to copy the folder first, then the assets.

■ ■ DAM – Image Editor (CMS-2809)

This feature allows users to perform light image editing in the CMS such as crop, resize, orient, and change to brightness. User can access the image editor by **double clicking on an image** and selecting the **Edit icon** in the top right corner of the page.

■ ■ DAM – Image Picker Update (CMS-1748)

Many of the DAM features are being added to the Image Picker tool in the Content Form View. Users can open an asset in **[Form View]**, press the **[Select]** button next to an image, and select the **top right icon**.

■ ■ DAM – Non-Native Image Types (CMS-3304)

Users can upload and consume non-native image types such as PSD, TIFF, RAW, and other proprietary types. Users can convert them using the CMS to JPG that they can use on their site.

☰ Ephox 9.0.0.120 (CMS-3407)

Due to compatibility issues with Java 1.0.7_45. The default version of Ephox has been updated. This version requires the user to have the current Java version 1.0.7_51

Other Updates to the Application

1. Fixed an error which takes place when trying to insert a panel in VB template on Volte (CMS-3488)
2. Fixed an issue with WYSIWYG boxes not maintaining size requirements with Ephox 9 (CMS-3356)
3. Fixed an issue where the Insert panel would be hidden when using TinyMCE full screen (CMS-3448)
4. Fixed an issue with Previews not resizing properly in the Picker window (CMS-3090)
5. Disabled the ability to copy a folder into itself (CMS-2665)
6. Disabled the ability to cut and paste assets into the same folder (CMS-2669)
7. Fixed an error which occurred when inserting an image in IE11 (CMS-3294)
8. Fixed an issue of not correctly filtering out invalid characters from asset labels when renaming via `postinput.aspx` (CMS-3506)
9. Fixed an issue where a user could potentially expire their own account (CMS-3392)
10. Fixed an issue where an email would fail to send when using an email template in Volte (CMS-3413)
11. Fixed an issue where an error would occur if no Browse States were selected (CMS-3491)
12. Fixed an issue where an error would occur when manipulating users in the User/Group matrix when the user list is greater than 250 (CMS-3297)

13. Fixed an issue where the thumbnail did not update when you replaced a binary asset with a different upload or modified it using the Aviary Image Editor (CMS-3462)
14. Fixed an issue which occurred when uploading 200+ images (CMS-3161)
15. Fixed an issue with the Access Properties not showing up correctly in Chrome (CMS-3412)
16. Fixed an issue with Unicode characters not showing up correctly in Volte drop-downs (CMS-3420)
17. Fixed an issues with the 'Group Updated' message appearing when no changes were made (CMS-3404)
18. Removed leading or trailing spaces when using the Rename command (CMS-2931)
19. Fixed an issue where clicking in the whitespace would not deselect an asset (CMS-2671)
20. Fixed an issue with the color selected for the Route command would not remaining selected (CMS-3360)
21. Fixed an issue in which the TinyMCE editor was stripping html code (CMS-3552)
22. Fixed an issue where users were allowed to delete an active workflow state (CMS-3355)
23. Fixed an issue in which assets were not being re-deployed after a branch asset was deleted (CMS-2977)
24. Fixed an issue with the correct model not showing when navigating to the folder from a link in a Preview page (CMS-3490)
25. Fixed an issue with tooltips on the Breadcrumb bar not displaying in Preview mode (CMS-3590)
26. Fixed an issue with WCO not loading properly when using a VB template (CMS-3587)
27. Removed an extra Copy Contents button on the Help -> Debug screen (CMS-3483)
28. Updated the Login Alerts Report to only list the number of failed logins on the report (CMS-3464)

