



TECHNICAL DOCUMENTATION 

**CROWNPEAK C# API
SYSTEM CONFIGURATION GUIDE
VERSION 3.0.1**

March 2014

© 2014 CrownPeak Technology, Inc.

All rights reserved. No part of this document may be reproduced or transmitted in any form or by any means, electronic or mechanical, including photocopy, recording, or any information storage and retrieval system, without permission from CrownPeak Technology.

INTRODUCTION 3
GETTING STARTED 4
BROWSER CONFIGURATION..... 5
DEVELOPER ENVIRONMENT CONFIGURATION 8

INTRODUCTION

To get the most from your access to templates and configuration screens in CrownPeak, you must complete the following steps to properly configure your browser, install the developer tools needed, and validate your access to CrownPeak and the C# API.

It will take an hour or so to complete these steps. This is especially important if you are attending training - this is the best way to arrive prepared and ready to work.

GETTING STARTED

Confirm you have access to a CrownPeak instance. You will need the following information

- **WCMS URL.** The URL for each CMS is unique for each customer. Your CrownPeak trainer, support or service contact should supply this URL.
 - **Note:** CrownPeak must be accessed through Hypertext Transfer Protocol Secure (HTTPS).
- **Username.** This will usually be your email address.
- **Password.** A CrownPeak administrator must set this.

If you do not have this information, contact your local CrownPeak administrator, or support@crowpeak.com.

BROWSER CONFIGURATION

There are **3 steps** to complete.

STEP 1: MAKE SURE YOU ARE USING A SUPPORTED BROWSER AND HAVE THE SUPPORTING APPLICATIONS INSTALLED

See the **System Configuration Guide** for system requirements. It is available here - <http://connect.crownpeak.com/systemconfigurationguide/>

STEP 2: CONFIGURE INTERNET EXPLORER

If you choose to use any version of IE or the Volte user interface, you will need to update your browser configuration. See **PC System Configuration** steps in the **System Configuration Guide**

STEP 3: LOG INTO WCMS

Once you have configured your browser, and installed Java and Silverlight, log into your instance with your username and password. Refer to the **Logging Into CrownPeak** steps in the **System Configuration Guide**

DEVELOPER ENVIRONMENT CONFIGURATION

There are **8 steps** to complete.

STEP 1: INSTALL VISUAL STUDIO

While it only requires a browser, Java and Silverlight to edit content in the WCMS, developing templates in the C# API requires Visual Studio and CrownPeak Desktop Connection (CDC).

Either Visual Studio 2010 or Visual Web Developer 2010 Express is required to create and edit template files with access to IntelliSense documentation and debugging tools.

Visual Studio Express is available at

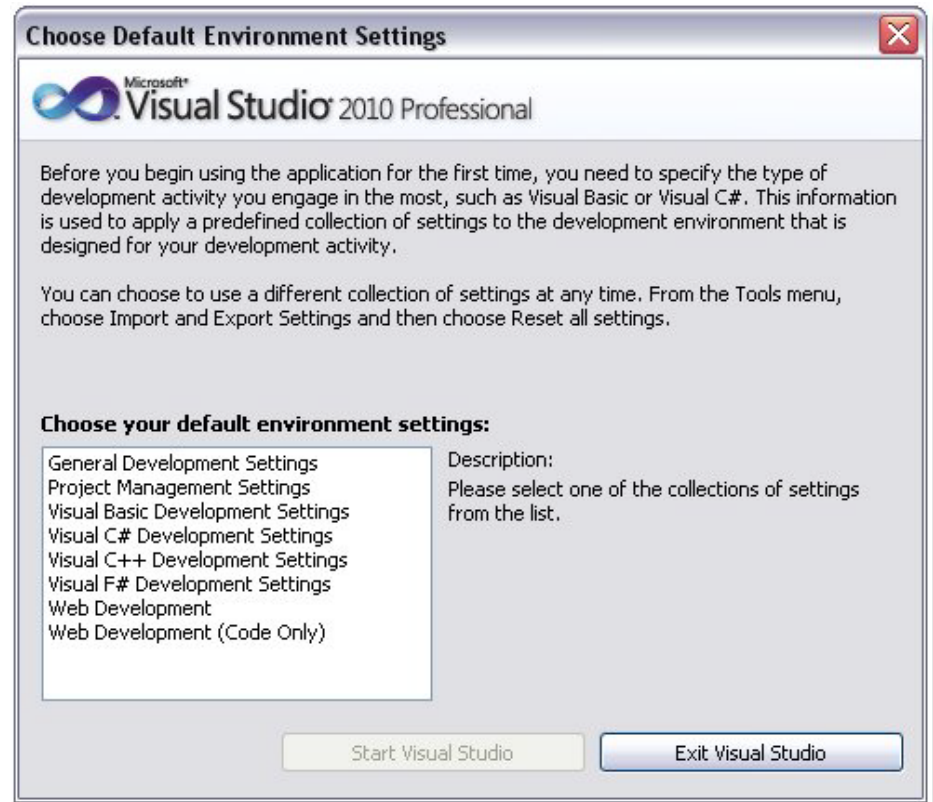
<http://www.microsoft.com/express/Downloads/#2010-Visual-Web-Developer>

Note: When using Visual Studio 2010 Web Developer Express. When a new template file is opened, the project file is edited. Visual Studio will then close all the files in the project and reload the project. All the files are still accessible if you expand the solution tree.

If you are not able to install either, API documentation is available at <http://help.crownpeak.com/cmsapi>.

When you first install Visual Studio, you will be asked to select a default environment. Choose **Visual C# Development Settings**.

Note: Visual Studio 2012 is supported but may require the



installation of MVC2 for intellesense to function. If you need to install MVC2, it can be downloaded at <http://www.microsoft.com/en-us/download/details.aspx?id=22079>

STEP 2: INSTALL CROWNPEAK DESKTOP CONNECTION (CDC)

Install the Standalone CrownPeak Desktop Connection (CDC) from <http://cdc.crownpeak.com/standalone.aspx>.

The Standalone version is required for IntelliSense. If you previously installed the beta version of the Standalone Desktop Connection, please uninstall and download the current version.

For additional instructions on using the CDC, please check the installation manual

(<http://cdc.crownpeak.com/Desktop%20Connection%20Instructions.pdf>) and video user guide (<http://cdc.crownpeak.com/documentation.aspx>).

CrownPeak CrownPeak Desktop Connection

Name: CrownPeak Desktop Connection

Version: 1.2.0.30

Publisher: CrownPeak

The following prerequisites are required:

- Windows Installer 3.1
- .NET Framework 3.5 SP1 Client Profile
- .NET Framework 3.5 SP1

If these components are already installed, you can [launch](#) the application now. Otherwise, click the button below to install the prerequisites and run the application.

Install

[CrownPeak Customer Support](#) :: [ClickOnce and .NET Framework Resources](#)

STEP 3: CONFIGURE CROWNPEAK DESKTOP CONNECTION

Once you complete installation and the CDC begins to run, you will land on the configuration screen.

Enter the following on the configuration screen:

- **CMS Address:** For example, <https://advantage25.crownpeak.com/CrownPeak>. The url for each CMS is unique for each customer. Your CrownPeak trainer, support or service contact should supply this URL.
- **Username:** Username – same used to log into browser
- **Password:** Password – same used to log into browser
- **Default CMS Path:** /
- **Leave Local Storage as is**
- **Set Editor Path to:**
- **For Visual Studio:** C:\Program Files\Microsoft Visual Studio 10.0\Common7\IDE\devenv.exe
- **For Visual Studio Express:** C:\Program Files\Microsoft Visual Studio 10.0\Common7\IDE\VWDEpress.exe or C:\Program Files (x86)\Microsoft Visual Studio 10.0\Common7\IDE\VWDEpress.exe based on your OS version.
- **Click Save.** The CDC will ask if you want to reconnect to the server. Click **Yes**.

Configure Desktop Connection

Instructions

1. Enter the URL you use to login to the CMS.
2. Enter the "User Name" you use to log in to the CMS.
3. Enter the "Password" you use to log in to the CMS.
4. Optional: Change the startup CMS path.
5. Optional: Select the "Local Storage" folder, this is used to store your configuration settings and all the temporary template files.
6. Select the "Editor Path" by selecting the executable file for the program you want to use for editing. Optionally select "Use File Association" checkbox, which will use the default editor associated with the .ASP extension. This option can help if you are seeing multiple instances open.

CMS Address:

User Name:

Password:

Default CMS Path: ...

Local Storage: ...

Editor Path: ...

Editor Parameters:

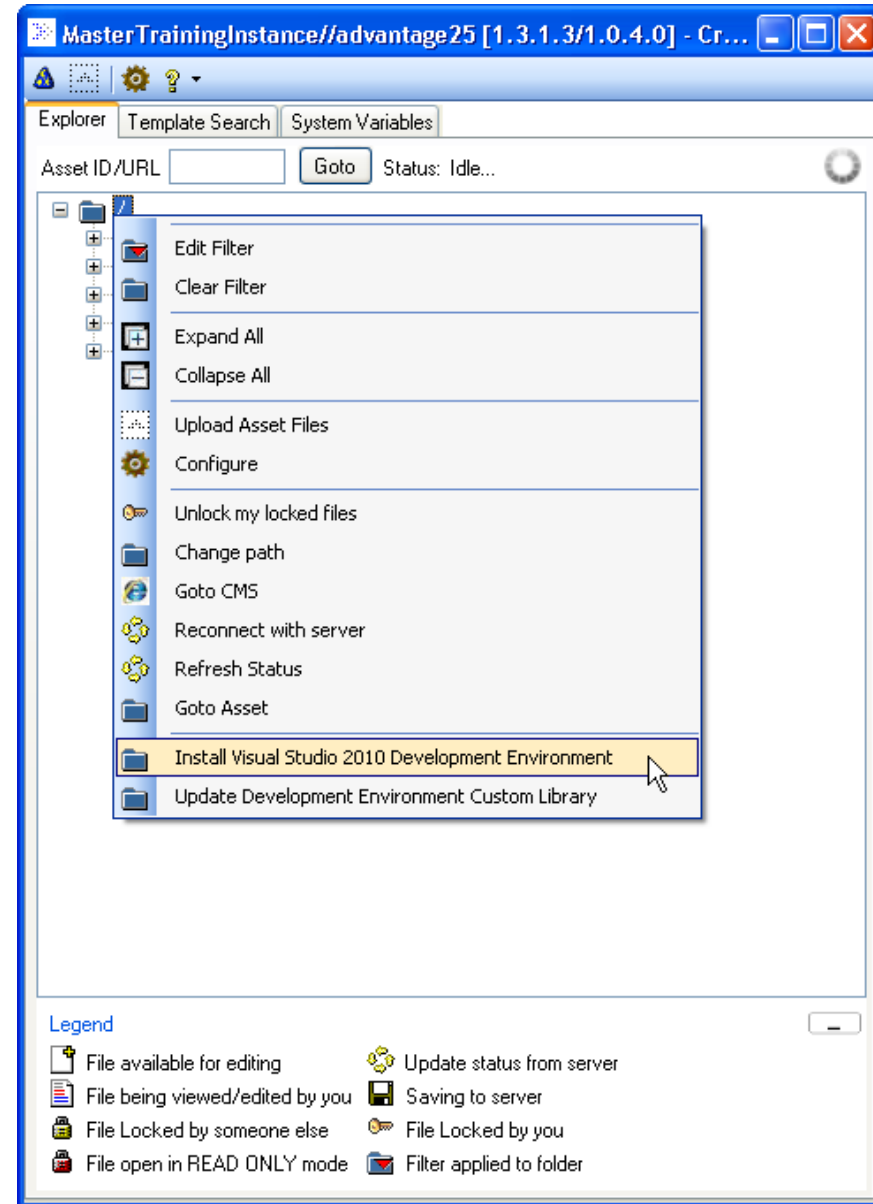
Use File Association

STEP 4: INSTALL DEVELOPMENT ENVIRONMENT

The CDC will reload and open the CDC explorer.

In the CDC explorer, right click on the Root folder ("/") and click **Install Visual Studio 2010 Development Environment**. This is required for debugging in Visual Studio.

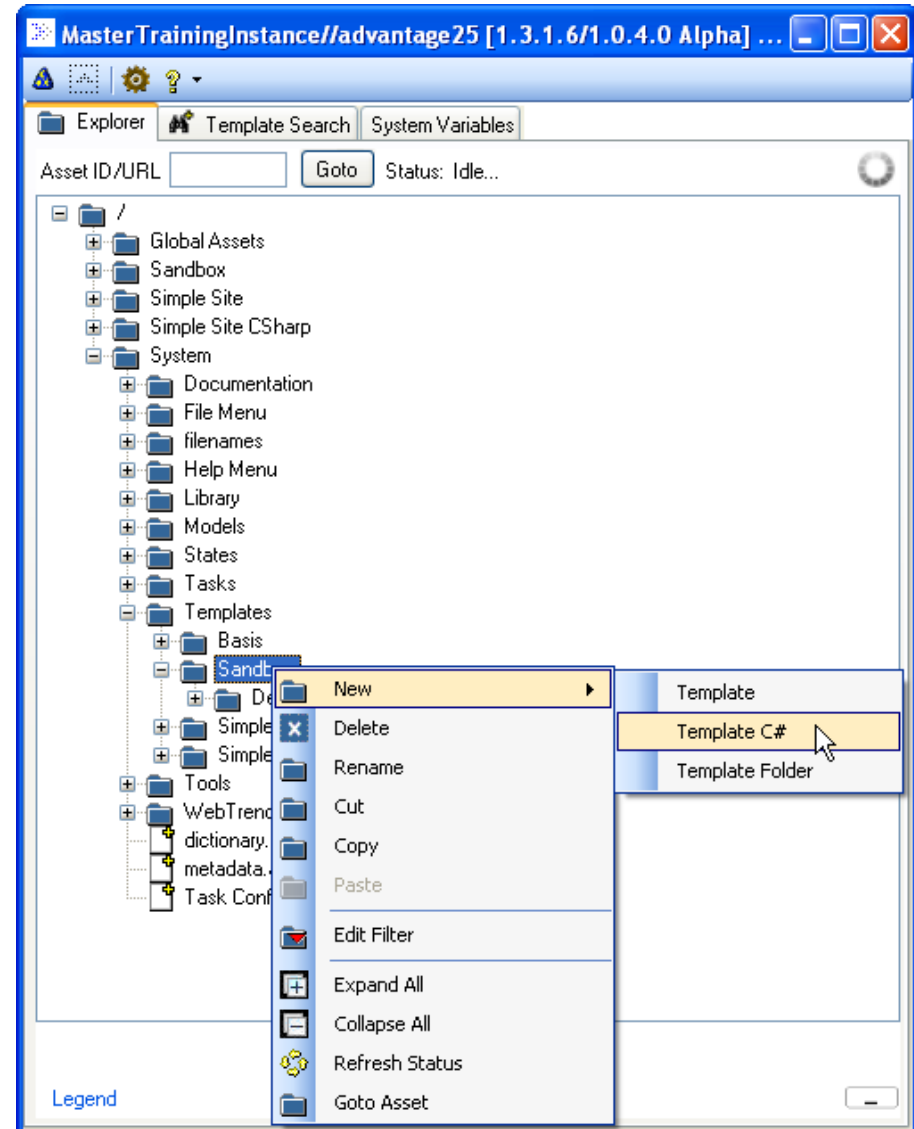
If these options are not visible, confirm you have selected the executable file for Visual Studio 2010 or Visual Studio 2010 Web Developer Express. This is required by the CDC to make these options visible.



STEP 5: CREATE A TEMPLATE

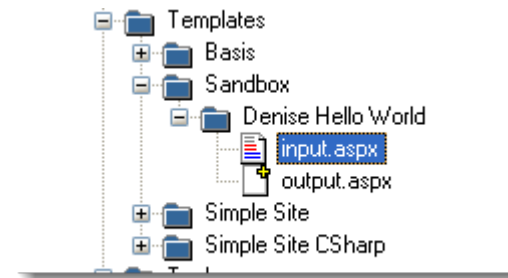
In the CDC explorer, navigate to the templates folder -
/System/Templates/Sandbox/ - right-click and select **Template C#**

Include your name in the template name, so it is identified as your work.



STEP 6: BUILD PROJECT

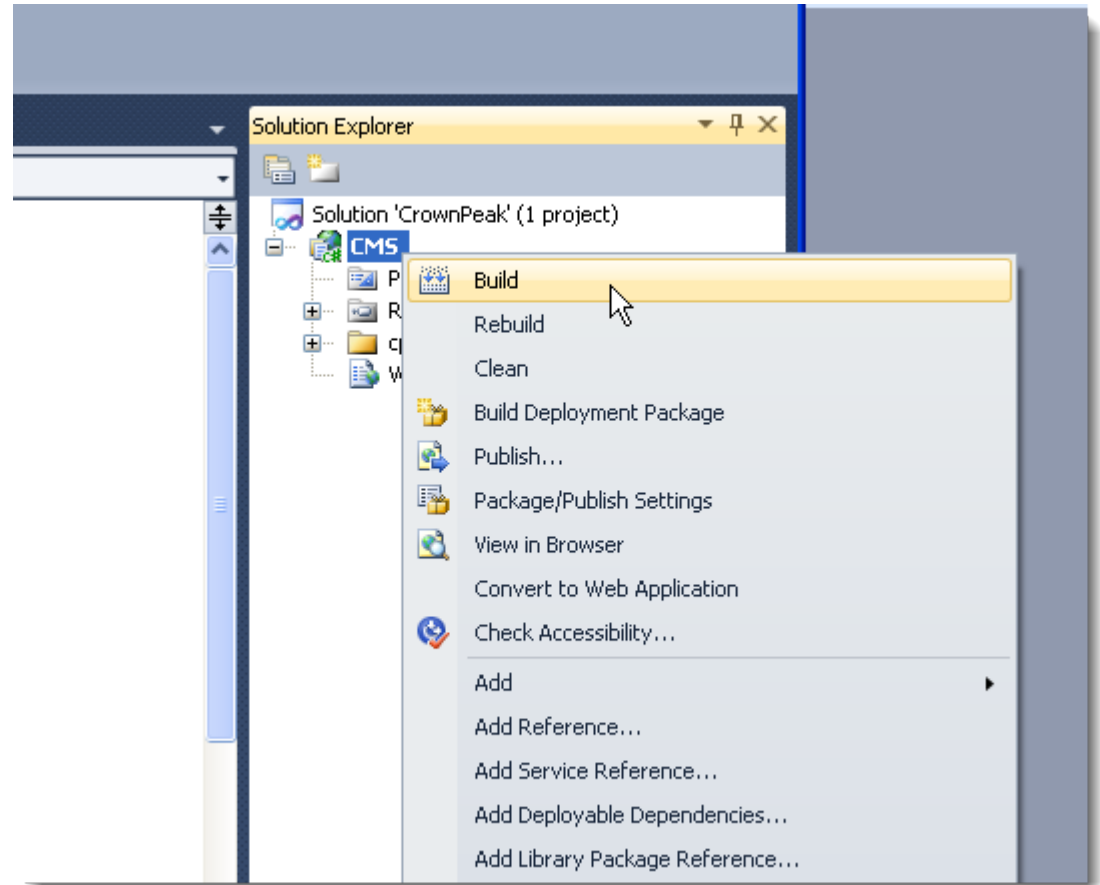
Select the **input.aspx** template file from your template in the CDC explorer. Double-click and this will open up an instance of Visual Studio, as configured in your settings. Give it a minute to start up so you do not create multiple instances of Visual Studio.



STEP 6: BUILD PROJECT (CONT'D)

In the Visual Studio Solution explorer, right-click on the **CMS** project and select **Build**. You will need to do this once to build up the IntelliSense files. From the Visual Studio View menu, you can select **Output** to check on the success of the build.

IntelliSense should be functional now and the template should be ready to edit.



STEP 7: CHECK INTELLISENSE

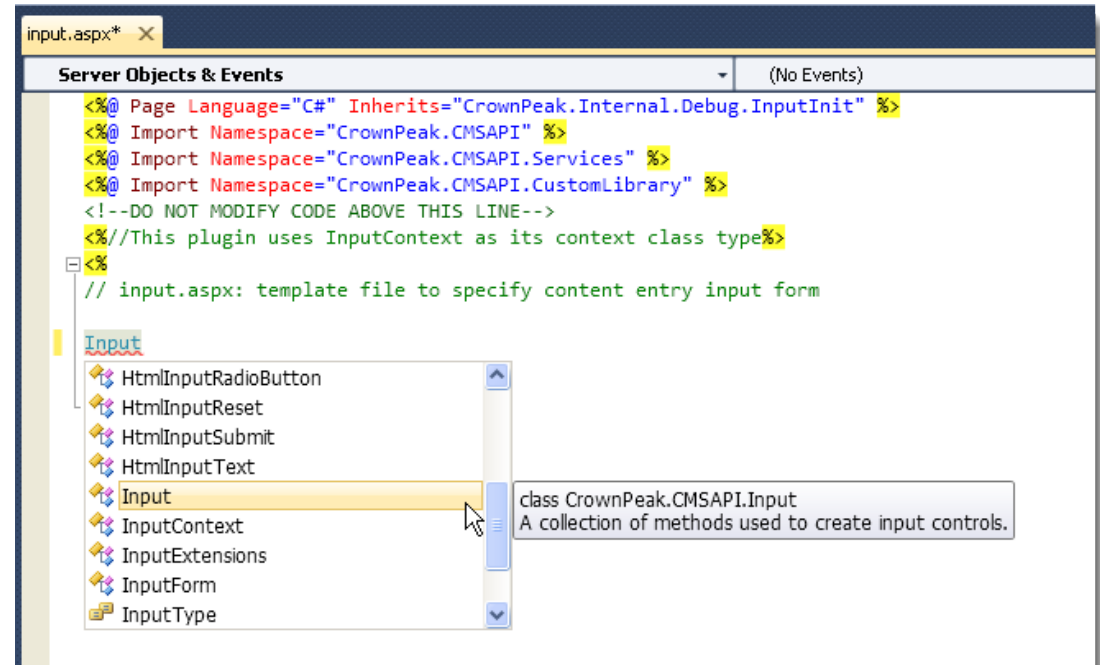
In Visual Studio, edit the input.aspx template.

Type

```
Input.ShowMessage("Hello World");
```

You should see IntelliSense messages along the way.

Once you have finished, save your changes.



STEP 8: LINK TEMPLATE TO ASSET

Now, log into the WCMS instance in your web browser.

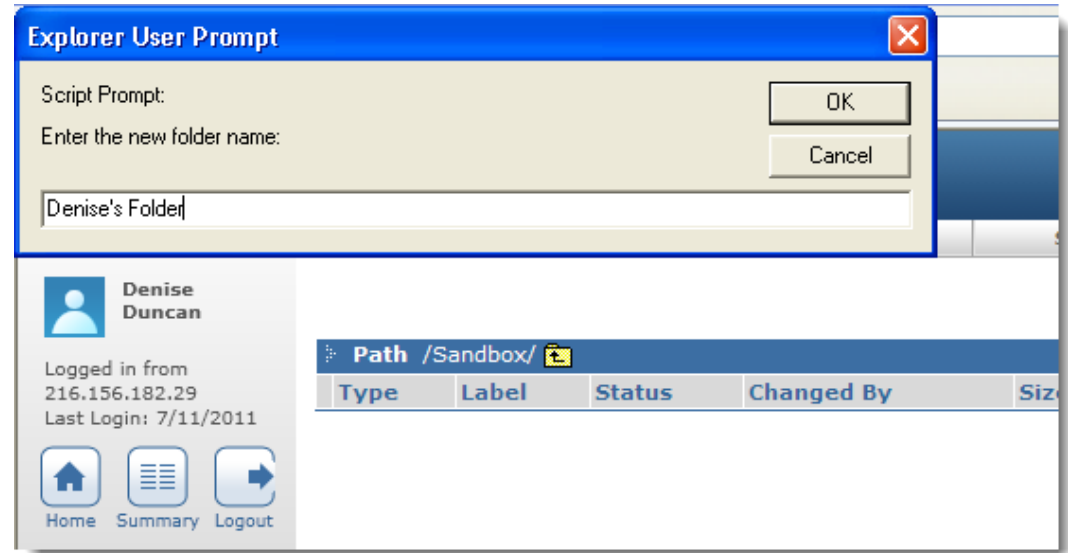
Use the same username and password used to configure the CDC.

Navigate to your Sandbox folder by selecting **File > Open > Sandbox**



STEP 8: LINK TEMPLATE TO ASSET (CONT'D)

In the **Sandbox**, create a folder by selecting **File > New > Folder**. Be sure to include your name in the folder name to identify it as your work.



STEP 8: LINK TEMPLATE TO ASSET (CONT'D)

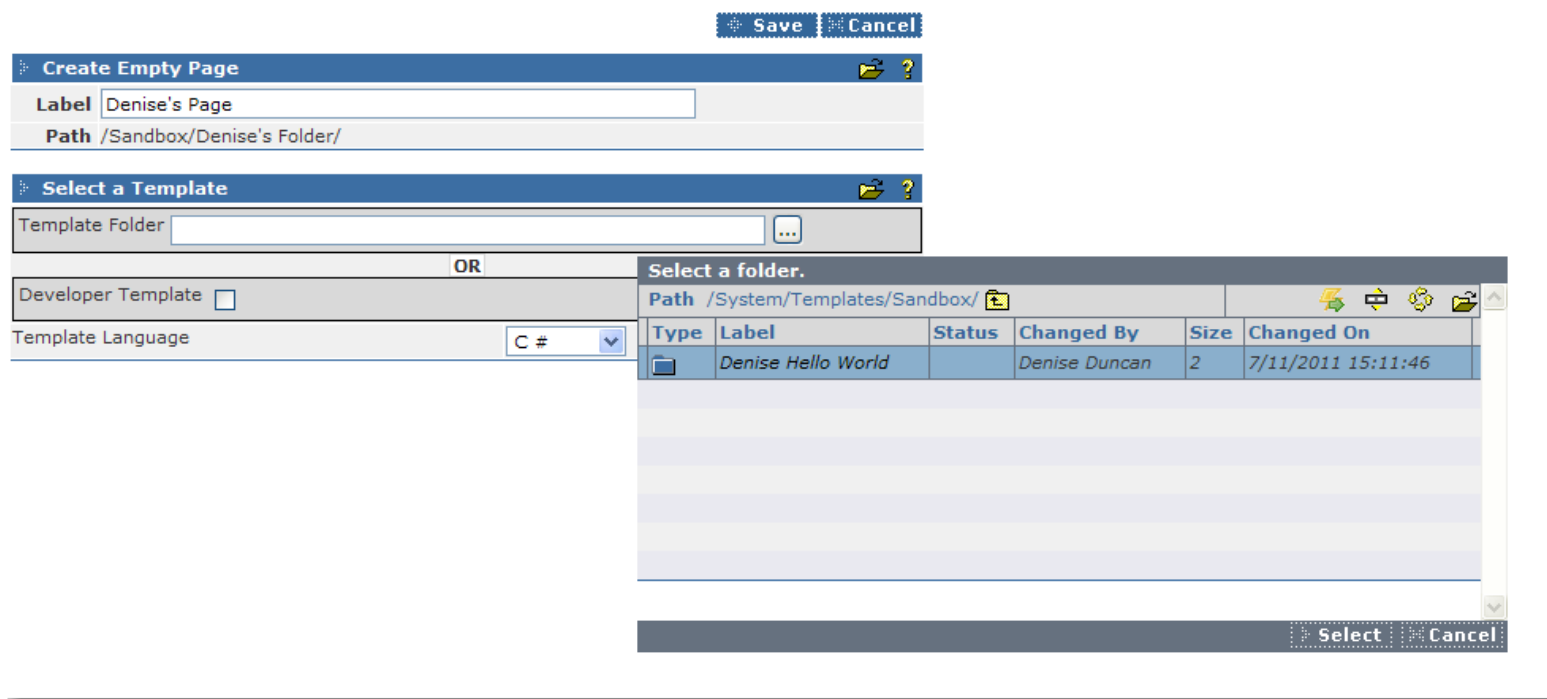
In this folder, create a new file by selecting **File > New > File**.

Enter a label or name for the file. This will be visible in the WCMS folder view.

Link this to template you created by selecting it from the WCMS browser modal window.

Select C# as the template language.

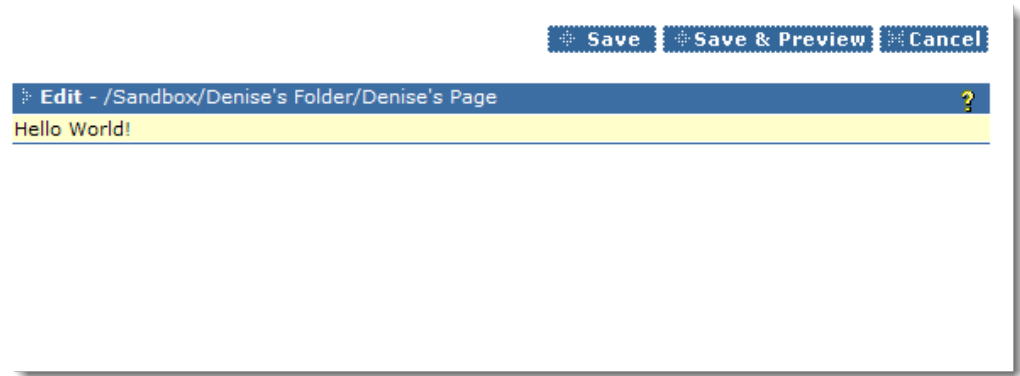
Click **Save** to return to folder view.



STEP 8: LINK TEMPLATE TO ASSET (CONT'D)

In the WCMS folder view, select the page you just created, then right-click and select **Edit** to see your message.

Click **Cancel** to exit and return to the folder.



SUCCESS! YOU ARE READY TO BEGIN C# TEMPLATE DEVELOPMENT!



5880 West Jefferson Boulevard, Unit G
Los Angeles, California 90016
p. 310-841-5920 f. 310-841-5913
www.crownpeak.com